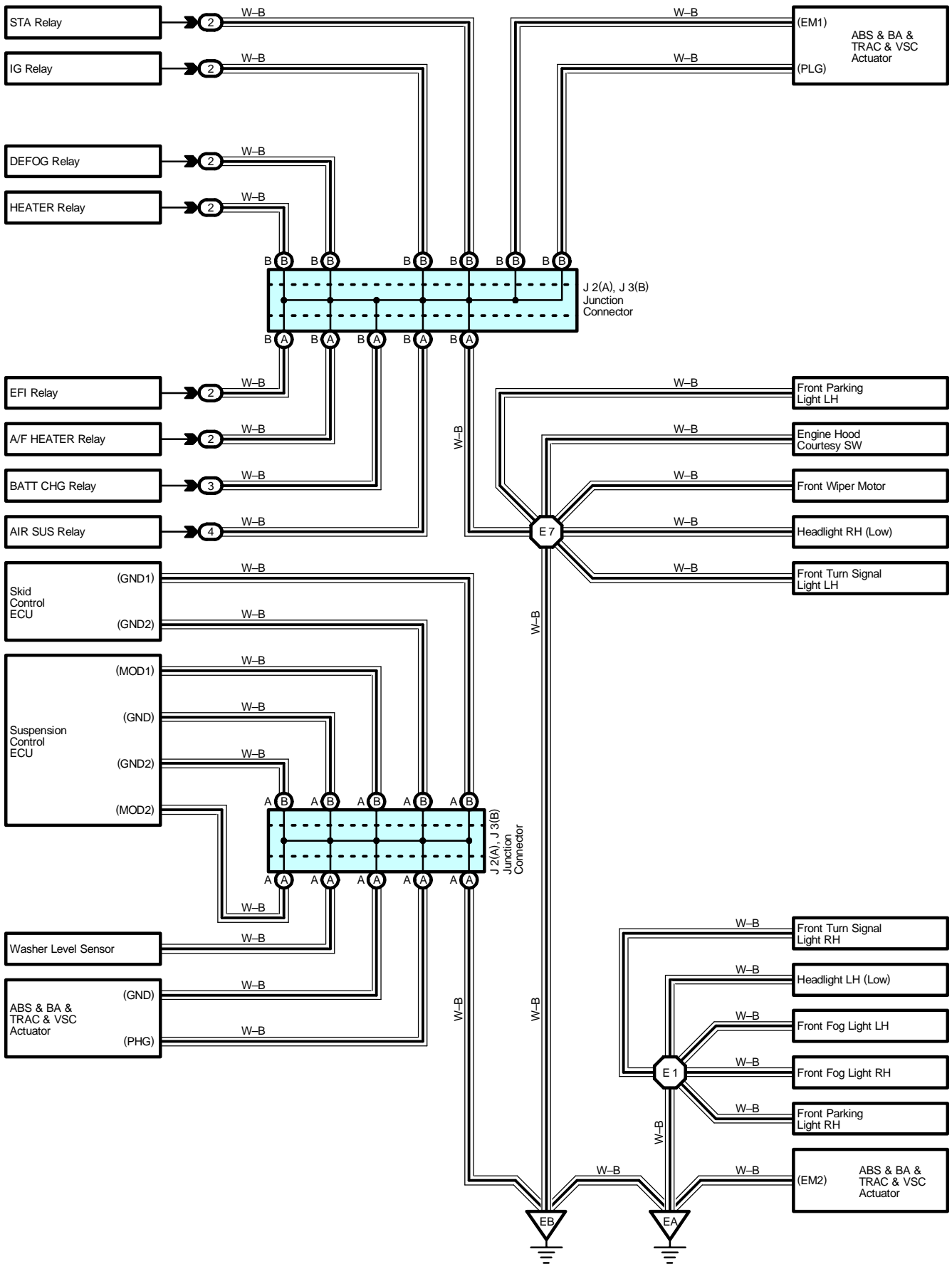
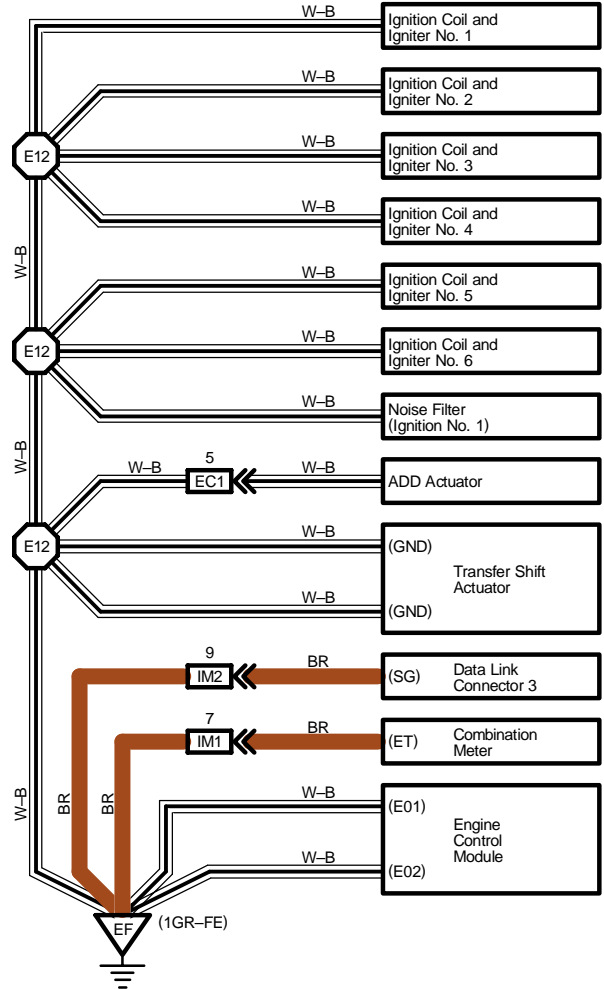
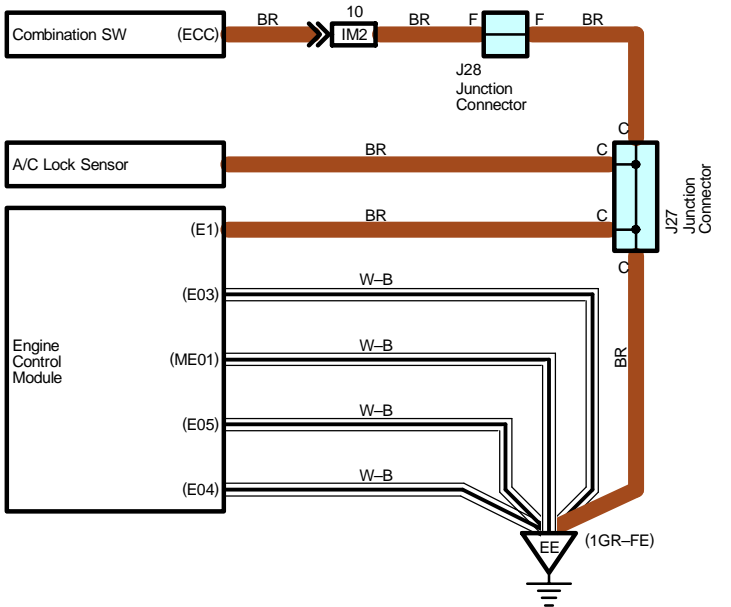
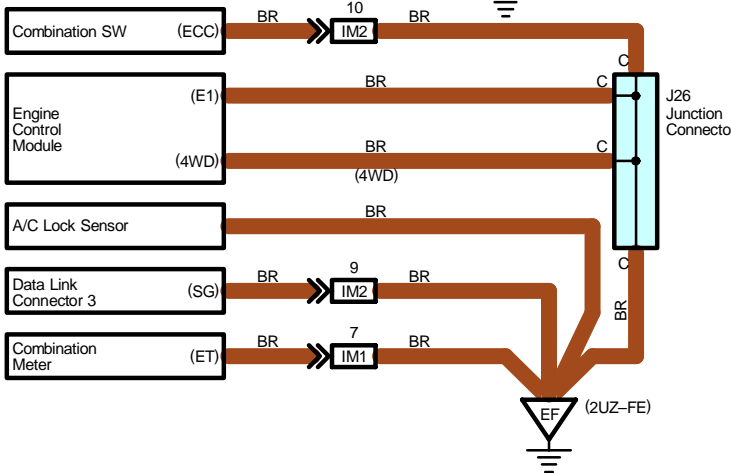
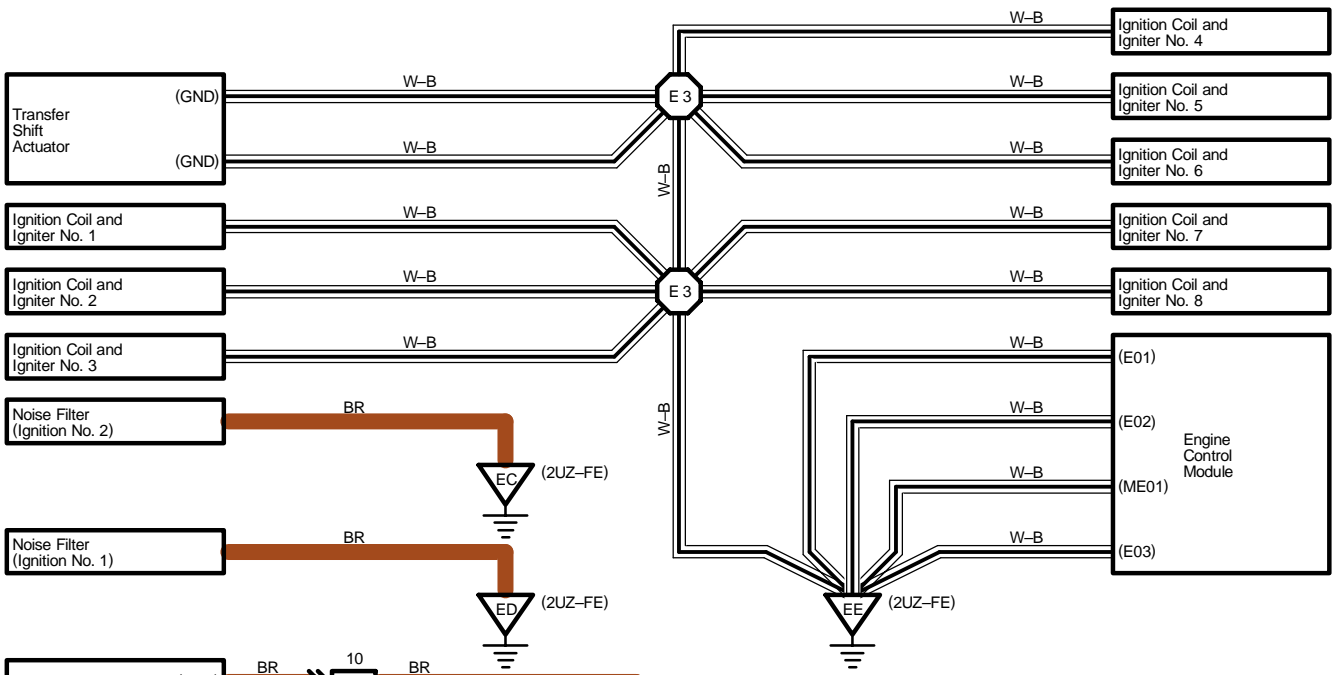
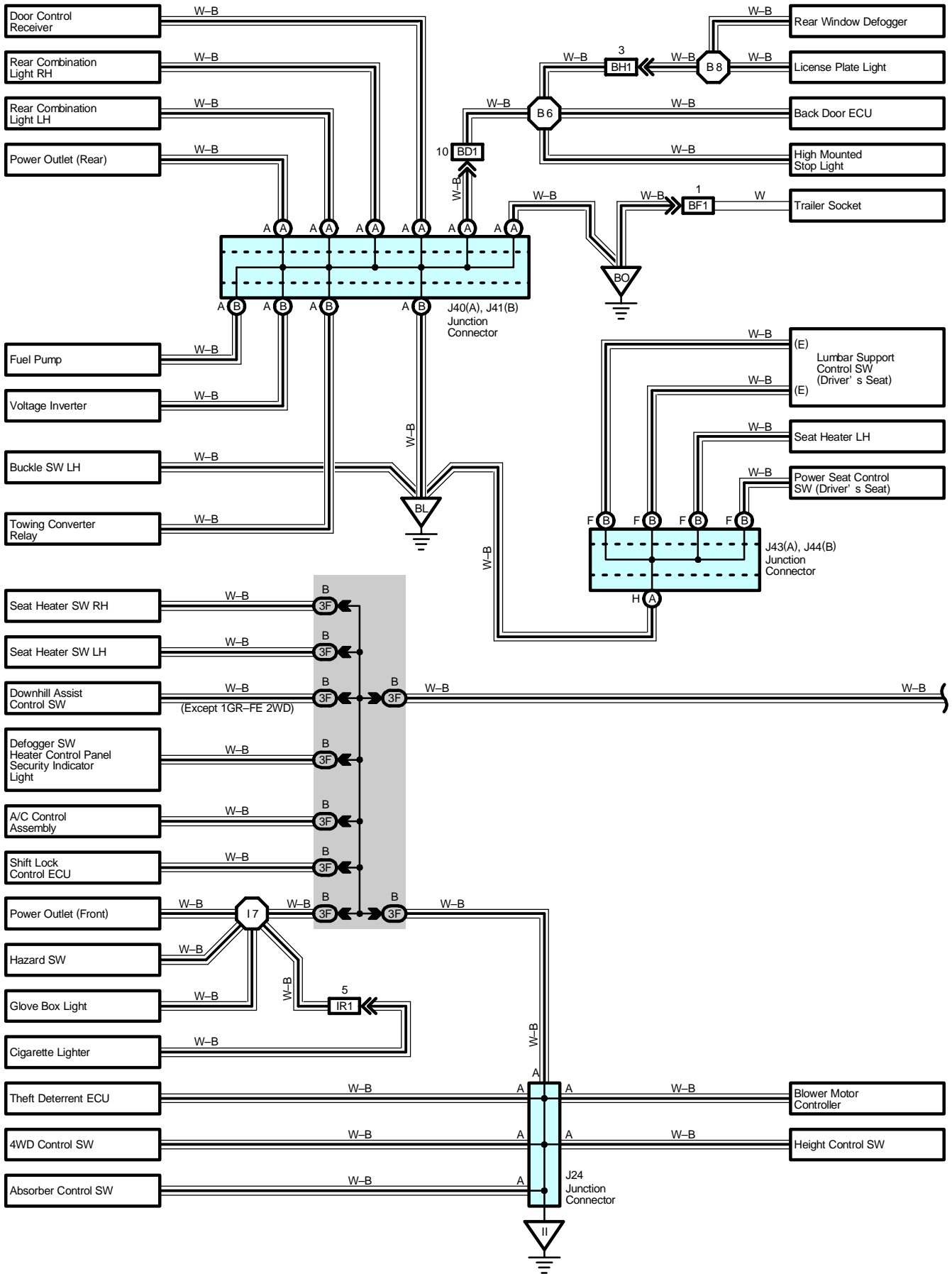


# I GROUND POINT

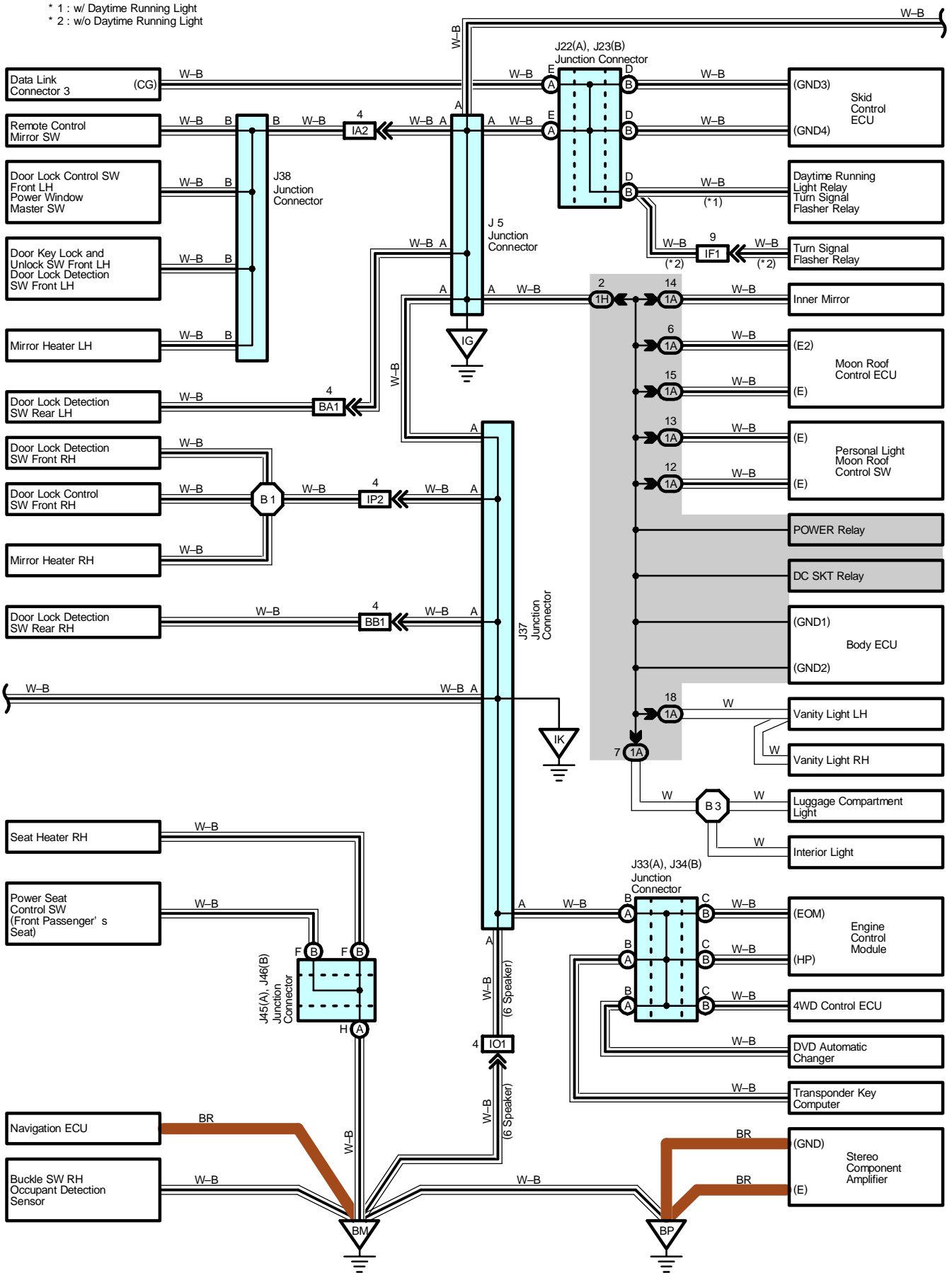




# I GROUND POINT

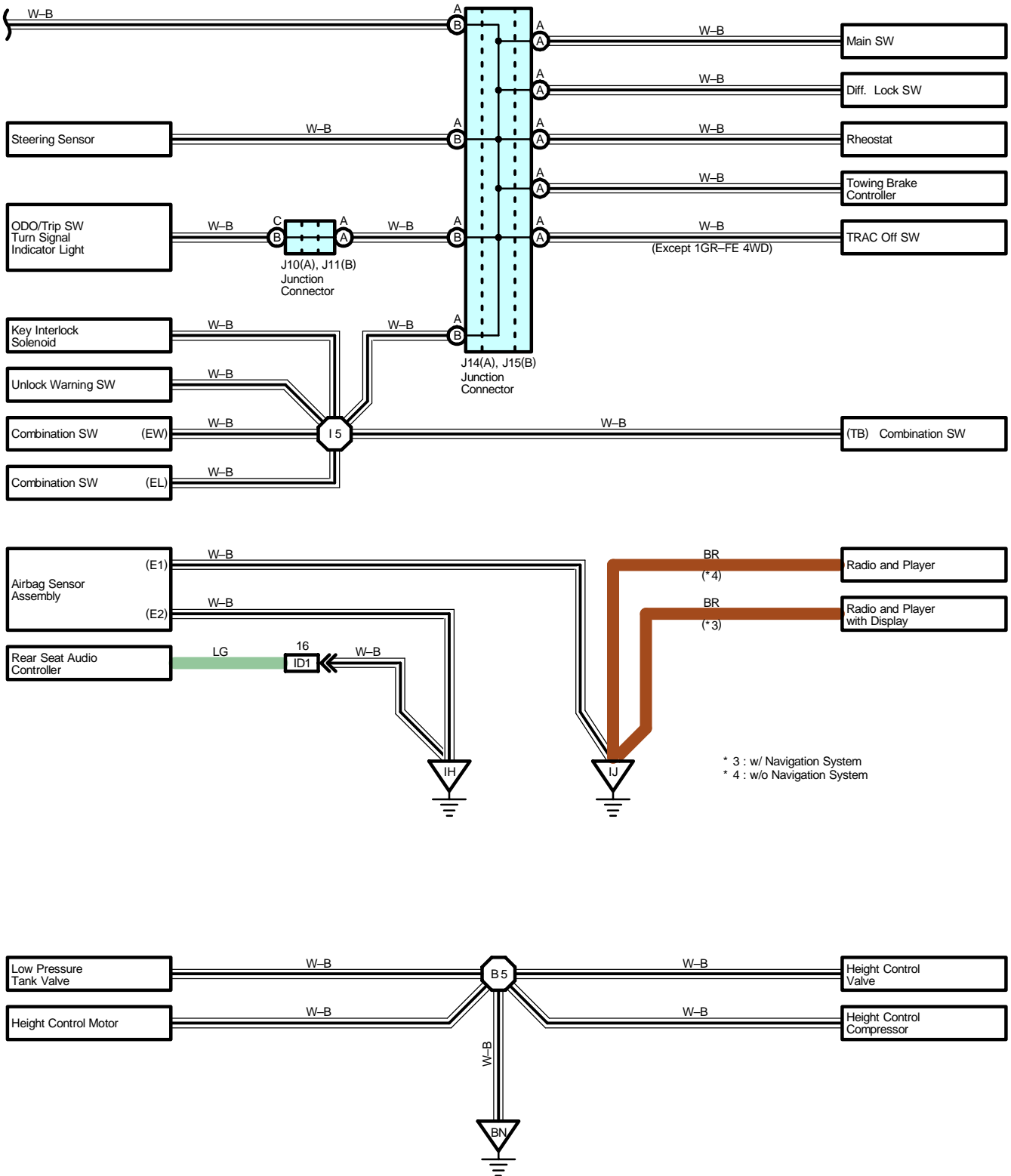


\* 1 : w/ Daytime Running Light  
\* 2 : w/o Daytime Running Light



2003 4RUNNER (EWD514U)

# I GROUND POINT



: Parts Location

Code		See Page	Code		See Page	Code		See Page
J2	A	33 (2UZ-FE)	J22	A	38	J38		40
		35 (1GR-FE)	J23	B	38	J40	A	40
J3	B	33 (2UZ-FE)	J24		38	J41	B	40
		35 (1GR-FE)	J26		38	J43	A	42
J5		38	J27		38	J44	B	42
J10	A	38	J28		38	J45	A	42
J11	B	38	J33	A	38	J46	B	42
J14	A	38	J34	B	38			
J15	B	38	J37		38			

: Relay Blocks

Code	See Page	Relay Blocks (Relay Block Location)
2	22	Engine Room R/B (Engine Compartment Left)
3	23	Engine Room R/B No.3 (Engine Compartment Left)
4	23	Engine Room R/B No.4 (Engine Compartment Left)

: Junction Block and Wire Harness Connector

Code	See Page	Junction Block and Wire Harness (Connector Location)
1A	24	Roof Wire and Driver Side J/B (Lower Finish Panel)
1H	25	Instrument Panel Wire and Driver Side J/B (Lower Finish Panel)
3F	28	Instrument Panel Wire and Center J/B (Instrument Panel Brace RH)

: Connector Joining Wire Harness and Wire Harness

Code	See Page	Joining Wire Harness and Wire Harness (Connector Location)
EC1	46 (1GR-FE)	Engine Wire and Differential Wire (Near the Front Differential)
IA2	48	Front Door LH Wire and Instrument Panel Wire (Left Kick Panel)
ID1	48	Radio Installation Sub Assy Wire and Instrument Panel Wire (Left Kick Panel)
IF1	50	Instrument Panel Wire and Relay Wire (Behind the Instrument Panel J/B)
IM1	52	Engine Wire and Instrument Panel Wire (Right Side of Blower Unit)
IM2		
IO1	52	Instrument Panel Wire and Floor Wire (Right Kick Panel)
IP2	52	Front Door RH Wire and Instrument Panel Wire (Right Kick Panel)
IR1	52	Instrument Panel Wire and Cigarette Wire (Rear Console)
BA1	54	Rear Door No.2 Wire and Instrument Panel Wire (Left Center Pillar)
BB1	54	Rear Door No.1 Wire and Instrument Panel Wire (Right Center Pillar)
BD1	54	Back Door No.1 Wire and Floor No.2 Wire (Left Rear Side of Roof)
BF1	54	Frame No.3 Wire and Floor No.2 Wire (Rear Side of Side Frame LH)
BH1	54	Back Door No.1 Wire and Back Door No.2 Wire (Left Side of Back Door)

# I GROUND POINT



## : Ground Points

Code	See Page	Ground Points Location
EA	<a href="#">44 (2UZ-FE)</a>	Front Right Fender
	<a href="#">46 (1GR-FE)</a>	
EB	<a href="#">44 (2UZ-FE)</a>	Front Left Fender
	<a href="#">46 (1GR-FE)</a>	
EC	<a href="#">44 (2UZ-FE)</a>	Right Bank Cylinder Head
ED	<a href="#">44 (2UZ-FE)</a>	Left Bank Cylinder Head
EE	<a href="#">44 (2UZ-FE)</a>	Rear Side of Right Bank Cylinder Block
	<a href="#">46 (1GR-FE)</a>	
EF	<a href="#">44 (2UZ-FE)</a>	Rear Side of Left Bank Cylinder Block
	<a href="#">46 (1GR-FE)</a>	
IG	<a href="#">48</a>	Left Kick Panel
IH	<a href="#">48</a>	Instrument Panel Brace LH
II	<a href="#">48</a>	Instrument Panel Brace RH
IJ		
IK	<a href="#">48</a>	Right Kick Panel
BL	<a href="#">54</a>	Floor Seat Crossmember LH
BM	<a href="#">54</a>	Floor Seat Crossmember RH
BN	<a href="#">54</a>	Near the No.5 Crossmember of Side Frame LH
BO	<a href="#">54</a>	Rear Pillar LH
BP	<a href="#">54</a>	Rear Pillar RH



## : Splice Points

Code	See Page	Wire Harness with Splice Points	Code	See Page	Wire Harness with Splice Points
E1	<a href="#">44 (2UZ-FE)</a>	Engine Room Main Wire	I7	<a href="#">50</a>	Instrument Panel Wire
	<a href="#">46 (1GR-FE)</a>		B1	<a href="#">54</a>	Front Door RH Wire
E3	<a href="#">44 (2UZ-FE)</a>	Engine Wire	B3	<a href="#">54</a>	Roof Wire
E7	<a href="#">44 (2UZ-FE)</a>	Engine Room Main Wire	B5	<a href="#">54</a>	Frame Wire
	<a href="#">46 (1GR-FE)</a>		B6	<a href="#">54</a>	Back Door No.1 Wire
E12	<a href="#">46 (1GR-FE)</a>	Engine Wire	B8	<a href="#">54</a>	Back Door No.2 Wire
I5	<a href="#">50</a>	Instrument Panel Wire			

